



AVELEY
SECONDARY COLLEGE

PARENT HANDBOOK

55 Maffina Parade, Ellenbrook
www.aveleysc.wa.edu.au

TABLE OF CONTENTS

| | |
|-------------------------------------------------------------------------------|----|
| GENERAL INFORMATION | 3 |
| SCHOOL CONTACT DETAILS..... | 3 |
| OTHER WAYS AVELEY SECONDARY COLLEGE COMMUNICATES WITH PARENTS/GUARDIANS:..... | 3 |
| COMMUNICATION | 4 |
| OVERALL COLLEGE SITE MAP | 5 |
| INTERNAL COLLEGE SITE MAP | 6 |
| BELL TIMES | 7 |
| ACADEMIES | 7 |
| HOUSE SYSTEM | 7 |
| STUDENT SUPPORT | 8 |
| Middle School | 8 |
| Senior School | 8 |
| STUDENT DROP OFF | 8 |
| BIKE SHEDS..... | 9 |
| SMARTRIDERS..... | 9 |
| BUSES | 9 |
| OPERATIONS, INFORMATION AND PROCEDURES..... | 10 |
| COMPASS | 10 |
| ATTENDANCE | 10 |
| LATE TO SCHOOL PROCESS | 11 |
| SUN SMART AND EXTREME WEATHER PROCEDURES..... | 13 |
| DELIVERIES OR MESSAGES FOR STUDENTS | 13 |
| FAST FOOD OR OTHER BULK CONFECTIONARY ITEMS OR ENERGY DRINKS | 13 |
| BROOKLANE SHOPPING COMPLEX AND OTHER LOCAL BUSINESSES | 13 |
| STUDENT DRESS CODE..... | 14 |
| FIRST AID | 15 |
| UNIFORM ORDERS | 16 |
| STUDENT PROPERTY | 16 |
| MOBILE PHONES AND OTHER DEVICES | 16 |
| COLLEGE POLICIES | 17 |
| BRING YOUR OWN DEVICE (BYOD) | 17 |
| THIRD PARTY CONSENT | 17 |
| CONTRIBUTIONS AND CHARGES | 18 |
| PAYMENT METHODS..... | 19 |
| GOVERNMENT FINANCIAL ASSISTANCE | 19 |
| CAFÉ..... | 20 |

GENERAL INFORMATION

SCHOOL CONTACT DETAILS

| | |
|------------------|-----------------------------------------------------------------------------------------------------------------|
| Location: | 55 Maffina Parade, Ellenbrook WA 6069 |
| Main Phone: | 6296 1000 |
| Office Hours: | 8:00 am to 4:00 pm during School Term |
| Website: | www.aveleysc.wa.edu.au |
| Facebook: | https://www.facebook.com/AveleySecondaryCollege/ |
| Absentee Phone: | 6296 1021 |
| School Security: | Southern Cross Security 1300 136 102 Please report any suspicious behaviour. |

The College has multiple email addresses for families to use. Each email is monitored by various staff, ensuring you receive a response in a timely manner.

| | |
|------------------------------------|--------------------------------------------------------------------------------------------------------------------|
| General Enquiries: | Aveley.SC.GeneralEnquiries@education.wa.edu.au |
| Education Support: | Aveley.SC.EdSupport@education.wa.edu.au |
| Enrolment Enquiries: | Aveley.SC.Enrolments@education.wa.edu.au |
| Accounts Enquiries: | Aveley.SC.Finance@education.wa.edu.au |
| Middle School - Years 7, 8 & 9: | Aveley.SC.MiddleSchool@education.wa.edu.au |
| Senior School - Years 10, 11 & 12: | Aveley.SC.SeniorSchool@education.wa.edu.au |
| Absentee email: | Aveley.SC.Absence@education.wa.edu.au |

PLEASE NOTE: Communication between the College and parents is primarily done via Compass and email. It is important to check your emails regularly and inform the school of any changes to your email address or contact details. You are required to notify the school as soon as any enrolment details for your child changes. You can update personal contact details in-person or via email
Aveley.SC.GeneralEnquiries@education.wa.edu.au

OTHER WAYS AVELEY SECONDARY COLLEGE COMMUNICATES WITH PARENTS/GUARDIANS:

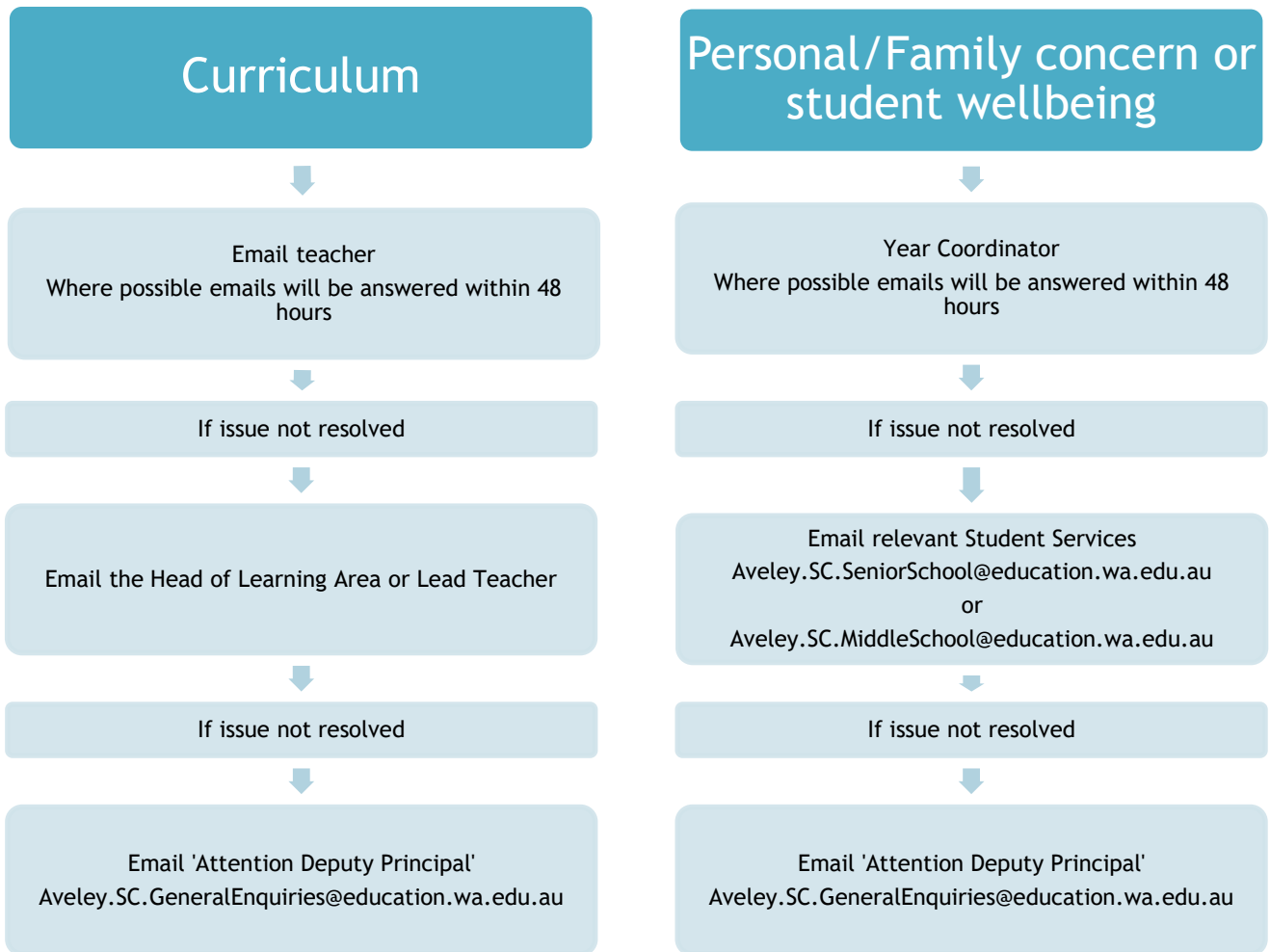
- **SMS:** The College uses SMS messages to notify parents of a child's attendance or to convey vital information or reminders. Please ensure you notify the College of any changes to your phone number.
- **College Newsletter:** The College newsletter is emailed out twice a term and is also available on our website. The newsletter contains information regarding activities and events, excursions, achievements and other relevant College information.
- **Website:** Information and important dates are regularly updated on our website. You are able to access information such as staff contact details, curriculum and subject selection details, newsletters and College policies.
- **Facebook:** Follow us on Facebook to see photos of special events, student achievements and exciting in-class activities.

COMMUNICATION

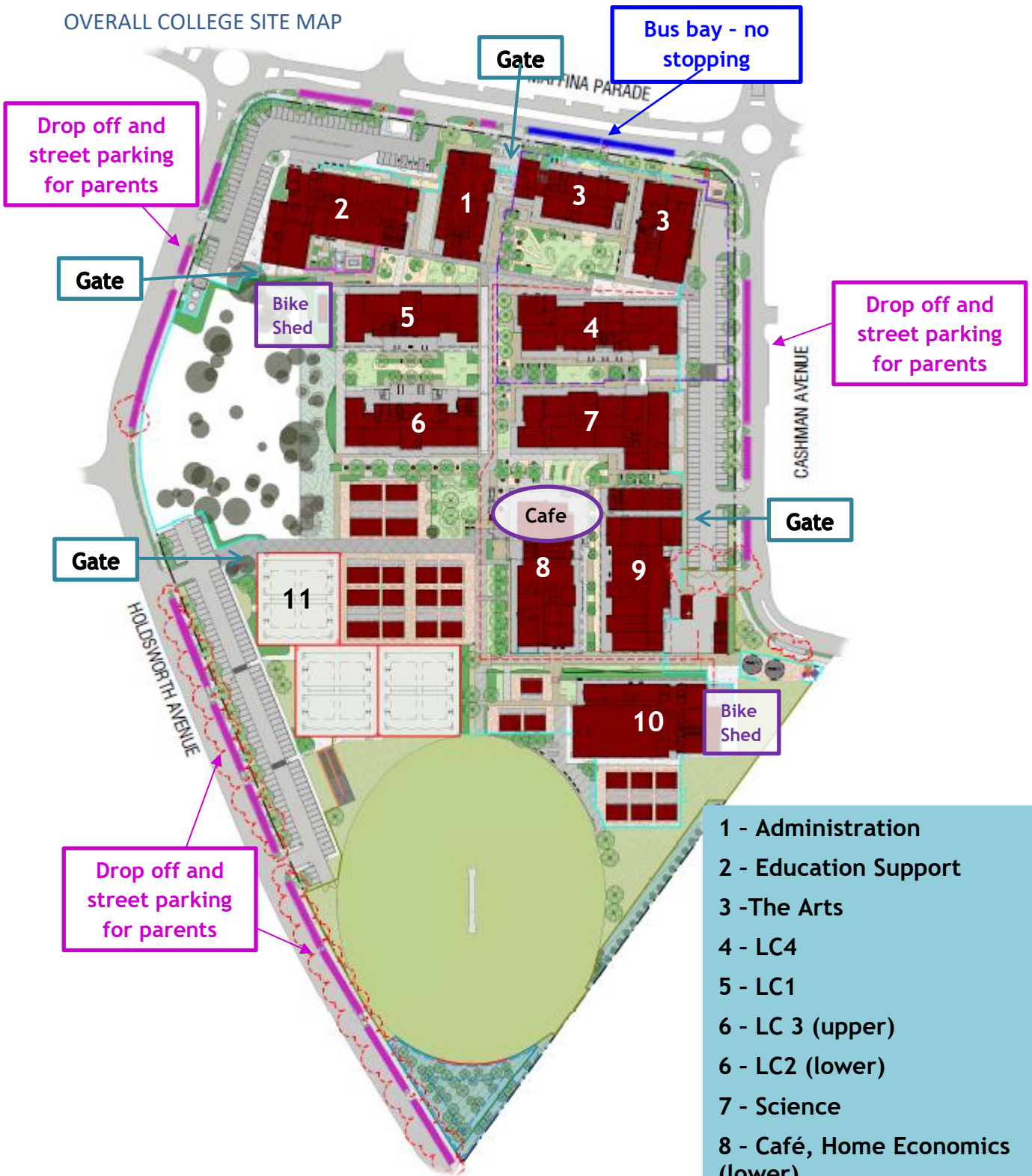
If you have concerns or feedback about how your child is performing in class, please contact your child's teacher for the relevant learning area.

Please contact your child's sub school for issues relating to wellbeing and emotional support.

How to communicate with Aveley Secondary College staff

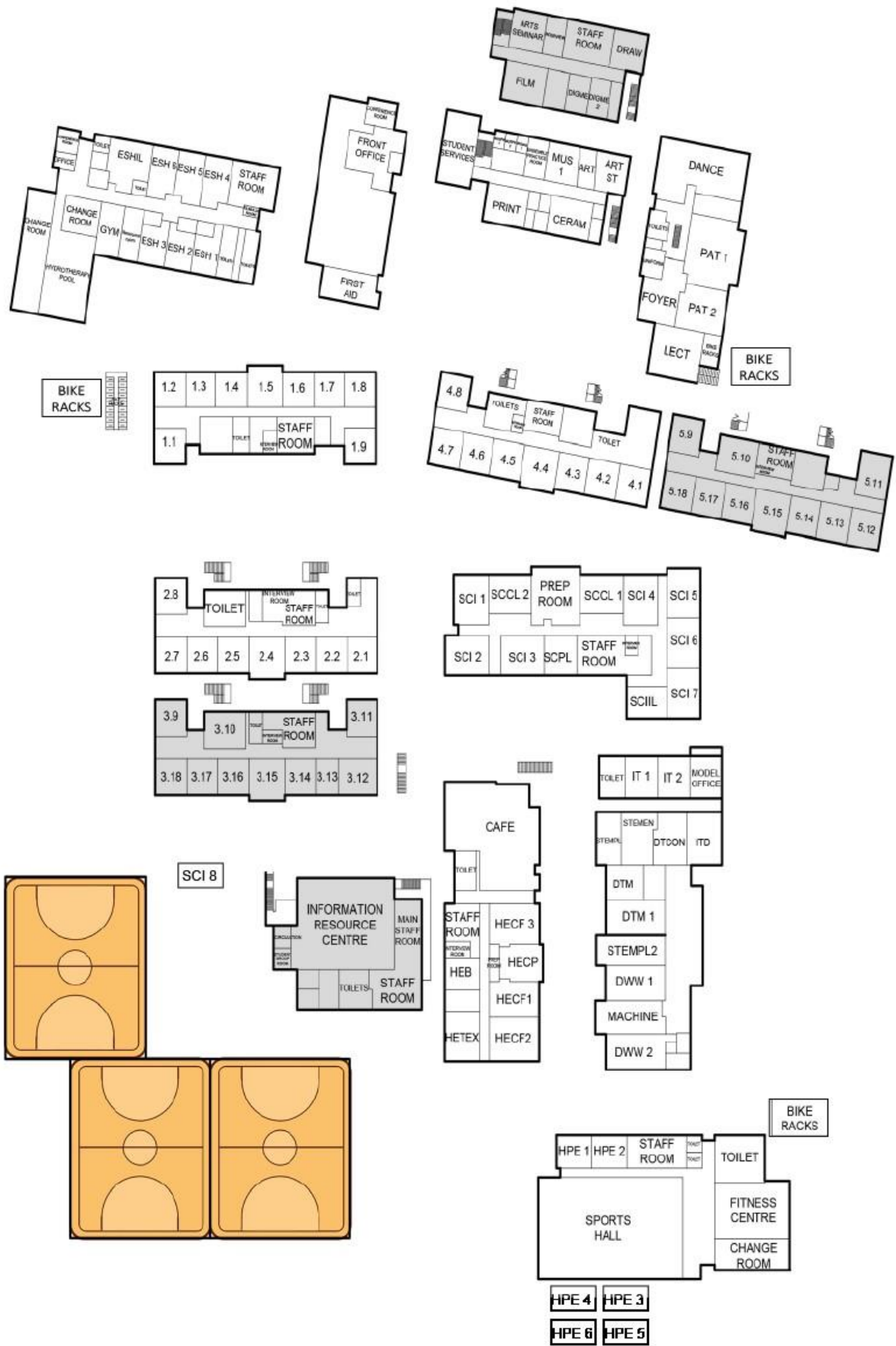


OVERALL COLLEGE SITE MAP



- 1 - Administration
- 2 - Education Support
- 3 -The Arts
- 4 - LC4
- 5 - LC1
- 6 - LC 3 (upper)
- 6 - LC2 (lower)
- 7 - Science
- 8 - Café, Home Economics (lower)
- 8 - Information Resource Centre (upper)
- 9 - Design and Technology
- 10 - Physical Education
- 11 - Multipurpose Courts

INTERNAL COLLEGE SITE MAP



BELL TIMES

Students will attend a five-period day with optional Academies available at the end of each day, except for Wednesday. Please note students will have early closing on Wednesdays.

Students are expected to be punctual to all classes. Music will play before the start of Period 1, 3 and 5 to remind students to move to their classes.

| | Monday, Tuesday, Thursday and Friday | Wednesday |
|------------------------------|---------------------------------------------|------------------|
| Warning Siren | 8.25am | 8.25am |
| Period 1 | 8.30 – 9.30 am | 8.30 – 9.30 am |
| Period 2 | 9.30 – 10.30 am | 9.30 – 10.30 am |
| Homeroom | 10.30 – 10.50 am | Nil |
| Lunch 1 | 10.50 – 11.15 am | 10.30 – 10.55 am |
| Period 3 | 11.15 – 12.15 pm | 10.55 – 11.55 am |
| Period 4 | 12.15 – 1.15 pm | 11.55 – 12.55 pm |
| Lunch 2 | 1.15 – 1.40 pm | 12.55 – 1.20 pm |
| Period 5 | 1.40 – 2.40 pm | 1.20 – 2.20 pm |
| Students finish | 2.40 pm | 2.20 pm |
| Optional Academies am | 7.30 – 8.20 am | Nil |
| Optional Academies pm | 2.40 – 3.40 pm | Nil |

ACADEMIES

Extra-Curricular activities, called Academies, are available either before or after College hours with the exception of Wednesday afternoons. Families and students will be notified each term which new Academies are offered that term. There may be an additional cost for some Academies.

HOUSE SYSTEM

Students are allocated a House and Homeroom upon enrolment. Homeroom is an opportunity for teachers to engage in activities to support student wellbeing, share the daily notices and provide handouts such as Photo Day envelopes or new timetables if classes have changed. A student's Homeroom is also used to identify students when signing in/out of school or when using Qkr!

The House system aims to encourage interest in school activities through healthy, positive competition between Houses. We also aim to recognise a range of student behaviours addressing our mutual agreements of Appreciation, Perseverance, Respect and Responsibility through the use of House points. Our Houses are named after endangered animals from the nearby Whiteman Park.



STUDENT SUPPORT

Students are provided with a wide variety of support structures to cater for their differing academic and wellbeing needs. We aim to develop in our students a sense of respect, responsibility, appreciation and perseverance, which are embedded into our everyday College practices. Our professional and dedicated student support team consists of two sub schools: Middle School (Years 7-9) and Senior School (Years 10-12)

Middle School

The Middle School sub school is comprised of compassionate staff who monitor and support the academic, behavioural and wellbeing growth of the students. The Middle School is run by the Deputy Principal and has a Year Manager and Year Coordinator for each year group (7-9). They also have dedicated School Officers and Youth Workers.

Senior School

The Senior School student support team places a strong focus on academic engagement and career pathways. The Senior School is run by a Deputy Principal and has staff overseeing behaviour, participation and engagement. A Dean of Studies, Career Advisor, Year Coordinators for each year group (10-12), Youth Workers and Vocational Education staff are all on hand to support the needs of our Senior School students.

In addition, all students from Years 7-12 can access other College support staff, such as the College Psychologist, Aboriginal and Islander Education Officer, Community and Cultural Liaison Officer, and First Aid Officer.

If you have any questions regarding the Student Support program or need to advise the College of emerging issues, please email the relevant Middle School or Senior School team:

Aveley.SC.MiddleSchool@education.wa.edu.au or Aveley.SC.SeniorSchool@education.wa.edu.au

STUDENT DROP OFF

The gates, as per the school map on page 5, will be open before and after school.

- Maffina Parade
- Cashman Avenue
- Holdsworth Avenue

Street parking around the school perimeter is available for student drop off and pick up in each of the above locations. Carparks are not to be used for general student drop off. Bus bays are not to be used for student drop off and pick up. Please consider the safety of your child and others. Education Support students can be dropped off at the front of the Education Support Hub, using the visitor bays. Education Support staff will be waiting to welcome your child.

BIKE SHEDS

Three secure Bike Sheds are available for students' bikes and scooters. Locations are shown on the map of the school on page 6. The sheds are locked during the day. It is recommended that students bring a bike chain/lock for additional security. Students should always wear helmets when riding to and from school and be aware of road safety especially when crossing roads or in the carparks.

SMARTRIDERS

New students are issued with a Smartrider card, enabling them to use public transport on a student fare. This may take several weeks to arrive. Replacement Smartrider Cards cost \$5.00 which can be paid at the Administration office and may take up to a week to arrive.

BUSES

Bus Services often change at the start of the school year in order to offer the best possible service across the network. These changes include School Specials, as well as regular routes that service schools.

Students intending to travel to school via public transport should:

- Check [Transperth](#) for relevant information. As services change, their website information will be updated.
- Plan your journey prior to the start of school. The Transperth [JourneyPlanner](#) will be updated with the new school services **two weeks prior to the start of school**. Remember to change the date in the JourneyPlanner to the first day of school.

Transperth have a free online program that is flexible and interactive, with extensive resources for parents and students so families can learn how to use public transport safely and responsibly. Visit [Get On Board](#) to learn more.

Education Support Bus Service

Students enrolled at the Education Support Hub may be eligible for bus transport, or conveyance allowance, through the Public Transport Authority's School Bus Services. Accessing School Bus Services is an arrangement between the Public Transport Authority and the Parent. Online *Applications for Transport Assistance* must be submitted via the 'Parents' tab on the School Buses website:

<https://www.schoolbuses.wa.gov.au/>

OPERATIONS, INFORMATION AND PROCEDURES

COMPASS

Aveley Secondary College is excited to announce the use of the 'Compass School Manager Parent Portal'. We have recently transitioned over to Compass as our School Management Platform and will now be introducing the Parent Portal.

Using our Parent Portal, you will be able to:

- View up-to-date class and school attendance information
- Approve or enter upcoming or past absences for your child/ren
- Update your registered email and mobile number (used for SMS alerts) details
- Access information regarding upcoming events and news
- Communicate with your child's teachers more easily

Later when the full roll out occurs you will be able to:

- Access your child's academic progress
- Book your Parent/Student/Teacher conferences
- Pay school fees, charges and contributions
- Download, approve and pay for upcoming excursions

We have a selection of parent guides available on our [website](#) if you require assistance navigating the Compass app or webpage.

ATTENDANCE

It is important for children to attend school all day, every day.

When is it okay to not go to school?

An okay reason is one that prevents your child from getting to school. This could include:

- your child is unable to attend because they are sick
- attending cultural or religious observances such as sorry time and funerals
- an unavoidable medical appointment
- an unavoidable natural event such as flood waters or a cyclone

The Principal decides if the reason given for your child's absence is acceptable.

It's NOT OKAY to miss school if your child:

- is celebrating a birthday
- is going on a family holiday
- is visiting family and friends
- has slept in or had a big weekend
- is looking after other children
- has sport or other recreational activities that have not been approved by the school
- has appointment such as haircuts and minor check ups

If possible, routine medical and other health appointments should be made either before or after school, or during the school holidays.

Do you need to let the school know if your child will be away from school?

Yes, you need to let the school know the reason why your child is going to be, or has been, absent from school as soon as possible. Where possible, please discuss any upcoming absences in advance so we can let you know of important learning or activities your child will miss out on.

This requires a responsible person, usually a parent, to provide a reason for the absence within three school days. Having information about why your child is missing school helps us plan for their return to school and work out whether we can provide any further help to you.

Why is going to school so important?

At school, many concepts such as literacy and numeracy are taught in a sequence. Missing school means missing out on learning – which can often make it difficult to catch up later.

Going to school every day helps children learn the important life skill of ‘showing up’ – at school, at work, to sport and other commitments.

Research from the Western Australian Telethon Kids Institute shows that every day at school counts towards a student’s learning. Students who attend regularly, generally do better at school and in life.

What to Do

If your child is absent for any reason, please update your child’s attendance on Compass or contact our friendly Corporate Services Staff before 10am via any of the below methods. You need to provide your child’s full name, year group, reason for the absence and date range if they will be absent for more than one day.

Students marked as absent for period one without contact from a parent will automatically generate an SMS advising you of your child’s absence. Please click on the URL in the SMS and update your child’s absence as soon as possible.

Absentees email: Aveley.SC.Absence@education.wa.edu.au

Absentees Phone: 6296 1021

If your child needs to be collected from school for an appointment or other planned reason please give your child a note or email Absentees before school. Your child should then go to their Student Services and collect a slip advising what time they need to leave class. At the allocated time they should go to their Student Services to wait, parents should go to the front office and we will arrange for your child to sign out of school and meet you. If you urgently need to collect your child for an unplanned reason, please contact your child’s Student Services and we will endeavour to get your child out of class as quickly as possible. There may be delays, especially if your child is at lunch or in Physical Education.

LATE TO SCHOOL PROCESS

Aveley Secondary College values every minute students spend in class. Increasing numbers of student’s arriving late to class has required the College to implement a process to discourage lateness. Students arriving late to class interrupts the teaching and learning program for not only these students, but for the teacher and the rest of the class. We ask for parent support in assisting students to arrive on time for school and

supporting college processes where they do not. Students arriving chronically late (such as 15 minutes each day) lose the equivalent of 50 hours and 200 classes interrupted with their arrival over the year.

We understand that there may be occasions where students arrive late with a valid reason, which is beyond their control. However, the vast majority of late arrivals to school are through tardiness or poor preparation, which is preventable.

Reliable attendance and punctuality is an employability and life skill. Our focus is on developing the whole child and having high standards so that each child can reach their potential. Being on time maximises educational outcomes and prevents distractions for the whole class. This process has significantly reduced the number of late arrivals which in turn reduces lesson disruption across the school.

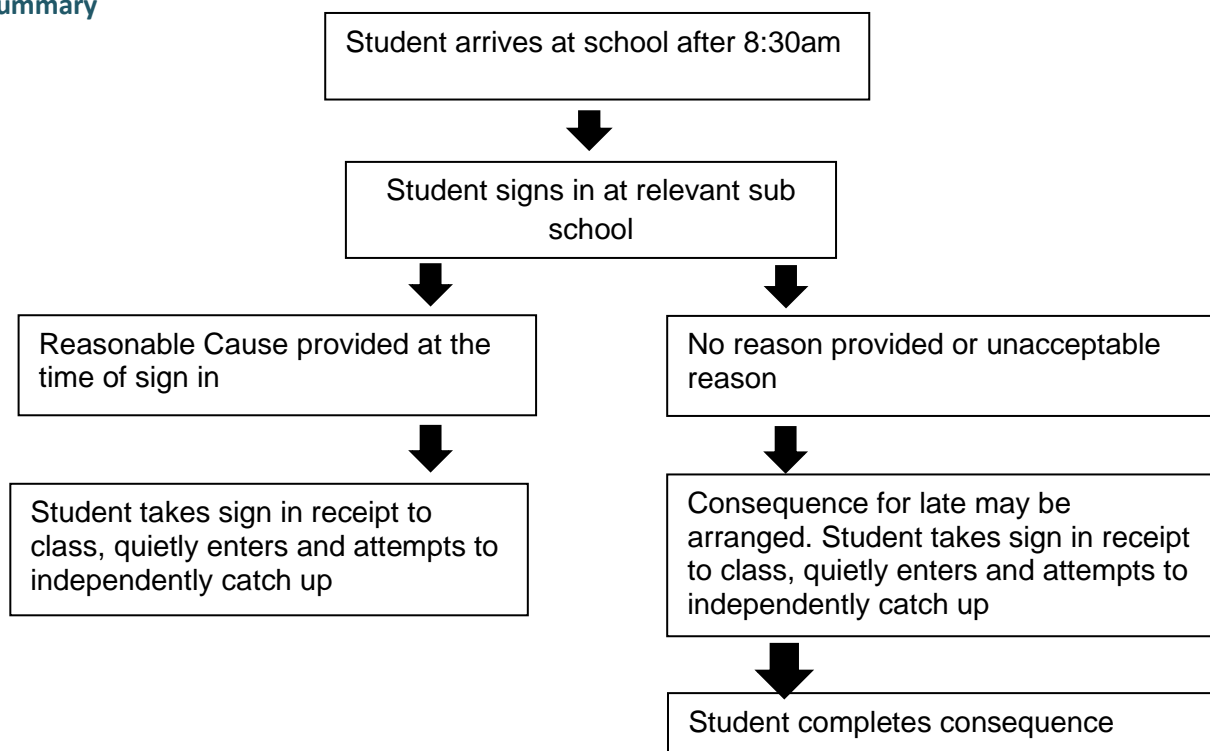
Students Late to School

All students who arrive late are required to sign in at their Student Services. All students will then be given a late note and sent to class. Students without evidence at time of signing in of a valid reason (medical note, appointment card, note or email from parent with valid explanation) may be given a consequence.

Frequently Asked Questions

- What is deemed as evidence? – Evidence can take the form of a medical certificate or appointment card, parent note or email that explains a reasonable cause, or in some case observable facts that support the cause.
- What is not Reasonable Cause? - Students arriving late due to tardiness, sleeping in, missing a bus, looking after younger siblings (except in an emergency).
- Why does my child have to arrive with or the school receive evidence prior to their arrival? - As the late records are read from two systems it is difficult to apply a reason and undo entries once applied, it also discourages students from breaching the mobile phone policy to prompt an explanation.

In Summary



SUN SMART AND EXTREME WEATHER PROCEDURES

- Students are encouraged to adopt Sun Smart behaviours through health promotion programs. This includes educating students about the importance of some UV exposure for Vitamin D.
- Although students are provided information and instruction, they are expected to be self-managing in applying Sun Smart behaviours at school.
- Caps and bucket hats are part of our school uniform and are encouraged to be worn outdoors.
- Sunscreen is available for outdoor physical education and activities at school. Students may be required to supply their own sunscreen for school excursions.
- It is understood that programs such as physical education need to be held at varying times of the school day, including at the hottest times. As far as practical, lengthier outdoors activities including physical education classes utilise shaded areas or suspend classes as required.
- Wearing caps and sunscreen, and promoting other Sun Smart behaviours, enable outdoors activities to be held all year around.
- Parents of students with specific medical conditions or taking medications affected by exposure to the sun need to have these recorded on the student's school medical profile. Parents should also contact their child's Physical Education teacher, by email or letter, regarding specific considerations for their child's participation in outdoor activities.
- For more information please see the Extreme Weather Procedure on our [website](#).

DELIVERIES OR MESSAGES FOR STUDENTS

Whilst items will be delivered to students in emergency situations, we ask parents to not expect or request deliveries of a non-urgent or preventable nature. Requests to speak to students during the day or pass on non-urgent messages are generally not permitted. As per the Department of Education policy, students are not permitted to use or have visible mobile phones during the school day. Students should not be contacting parents directly via their mobile devices. If students need to speak with a parent or need assistance, they should report to the relevant Student Services.

FAST FOOD OR OTHER BULK CONFECTIONARY ITEMS OR ENERGY DRINKS

The Department of Education has clear Healthy Food and Drink expectations and procedures for public schools. Where students are found to have bulk confectionary items, energy, soft drinks or slurpees; they are either confiscated or asked to be discarded. Any fast food delivery (via parent or delivery service) is not permitted. Lunch deliveries are also discouraged; if the student does not have access to a meal please speak with our Student Services office staff.

BROOKLANE SHOPPING COMPLEX AND OTHER LOCAL BUSINESSES

The Primewest Brooklane shopping complex is a boutique shopping precinct located across the road from the College. The proximity of the shops to the College presents some challenges to manage student access to the facilities before and after school. The presence of so many students (even well-behaved ones) en-mass can be intimidating and problematic for the centre and other local businesses. Students are still representatives of the College at the complex before and after school and accountable for their behaviour.

Students should be considerate of the community and shop owners and apply the following expectations:

- Use the paths provided for entry and exit to the shopping complex; do not cut through carparks either on foot, bicycle or skateboard. Bikes, scooters and skateboards should be walked or held (not ridden) through the complex.
- Avoid loitering in the complex. Students accessing the shops should be actively acquiring their purchases or services and then leaving, not waiting for friends or "hanging out".

- Students in College uniform should not be entering the complex in large groups. In principle, group size should be four or less.
- Students should follow instructions from shopping centre staff and behave in a respectful and appropriate way as school representatives.
- Students should not engage in any antisocial behaviour including conflicts or shoplifting.
- McDonalds and other businesses have a limit on the number of unaccompanied students (i.e without parents) that can be in store at any one time. If this is at capacity students should not loiter, and should come back at another time.

There is state of the art CCTV in the complex and the parties will work together and with local police to ensure that these expectations are the norm. Banning of individuals will be applied by the complex's where student's aren't complying with expectations or instructions. Larger bans may happen from venues such as McDonalds for any disorderly conduct which could impact the entire school cohort for a period. School based sanctions may also apply for community or retailer complaints to the College.

This precinct will also provide many of our student's opportunities for employment and have great convenient services for them to access, with appropriate use. We want our students to gain the benefits of these facilities; and interact with this complex in a positive way.

STUDENT DRESS CODE

The Dress Code at Aveley Secondary College is compulsory. Uniforms are provided through Uniform Concepts and available through the Uniform Shop based at the College and online. Parents indicate their support of this policy on their child's enrolment form.

Everyday wear:

- White cotton college shirt with logo. Shirts must be buttoned to just below the collar at all times. In colder weather a plain white T-shirt can be worn under the shirt for extra warmth.
- Navy blue college jacket with logo.
- Black enclosed school shoes or black sports shoes. Other sports shoes are allowed for sport as appropriate (see Physical Education and Sport Attire section). Unstructured flats and slip-ons are not accepted for safety reasons.
- Plain white, black or navy turnover crew or ankle socks.
- Navy opaque tights for girls. Leggings are not permitted.
- College tartan skirt with logo.
- Navy blue college shorts and navy blue college trousers with logo
- Navy knitted jumper with logo.
- Navy microfibre pant with logo.

Physical Education, Dance and Sport Attire (Unisex)

- College sports shorts with logo.
- College polo with logo.
- Navy blue college jacket with logo.
- Appropriate footwear (e.g. sports shoes) must be worn during all physical education sessions.
- The College cap or College bucket hat is recommended for outdoor activities.

- If the student has Physical Education for Period 1 or 5, College uniform must be worn to and from the College as changing time is provided at the beginning and end of PE lessons. Under no circumstances are students to wear PE uniform in other classes.

Caps, Scarves and Headscarves

- The College cap and bucket hat part of the College uniform and is recommended for outdoor activities and break times. Other generic and brand hats must not be worn.
- Headscarves (which may be worn for religious or cultural reasons) are to be in the college navy blue colour, or white.
- Neck scarves are to be in the college navy blue or teal in colour.

Make-up, Jewellery and Body Adornments

- Make-up, jewellery and body adornments must be minimal, unobtrusive and safe.
- Earrings must be sleepers or studs, and bracelets and chains should not be worn. Clear or skin-toned retainers must be worn for facial piercings.
- **Students are required to wear medical bracelets or other identifiers linked to their health needs.**

If, in the opinion of the College administration, students do not adhere to these guidelines, they will be required to make the necessary changes to conform to the Dress Code. The college is not responsible for lost valuables.

FIRST AID

Aveley Secondary College has a First Aid Officer located in the Senior School Student Services who is able to assist with any minor injuries or ailments and oversee the student's health records. This service is not designed to provide care for sick students who should otherwise be at home.

Any student, who becomes unwell or sustains a minor injury at school, must advise a staff member and be given permission to go to Student Services whereby arrangements will be made for the student's collection by an authorised adult. **Students must not use their mobile phone to contact home and make arrangements.** Any student who does not follow this procedure will be referred to the Associate Principal.

In the event of students sustaining a serious injury whilst at the College, staff will assess the injury and make contact with families and any emergency services, for example an Ambulance, where necessary.

In accordance with the Department of Education's policies we are unable to provide or administer any medication without the accompanying 'Form 3 – Administration of Medication'. If your child's health needs change, please contact the First Aid Officer who will be able to supply you with the appropriate forms.

FAQ: What health information do I need to provide the College?

- If you have indicated on the enrolment form that your child has diagnosed health concerns that may require support you will be asked to complete specific health care plans that will be provided to you.
- Please ensure that any medication and equipment you provide for your child is in-date and in good working order. Please provide replacement medication upon its expiry. Ventolin and Epi-Pens should be kept on the child.

- Any student medication and equipment that is stored on your behalf at the College for a long or short period of time must be accompanied by the Administration of Medication form signed by the parent. Forms are available on our website or from the Administration office.

UNIFORM ORDERS

Uniform Shop: Tuesday 8.00 am to 10.30 am
Thursday 8.00 am to 10.30 am

Uniform Concepts have been contracted to supply the College's uniforms. Uniforms can be ordered online and picked up at the onsite uniform shop.

Alternatively, uniform items are available during the opening hours. The uniform shop operates from the foyer of the Performing Arts building on Tuesday and Thursday 8.00 – 10.30 am and can be accessed from the Cashman Avenue carpark.

Telephone: 9270 4602

www.nellgray.com.au

STUDENT PROPERTY

Please clearly mark your child's property with their name. All student belongings including books, clothing and iPads should be clearly marked with your child's full name. The College cannot guarantee the security of student's valuables such as phones, iPods, MP3 players, jewellery and cash, therefore they should be left at home. Lost Property is located in the Health Centre for collection.

Lockers are only available in the sports hall for use during physical education classes. Students should bring a combination lock if they wish to use a locker.

MOBILE PHONES AND OTHER DEVICES

The Department of Education has introduced a policy that bans the use of mobile phones for all students from the time they arrive at school to the end of the school day. This extends to the use of smart watches which need to be on airplane mode during this period. The policy aims to reduce distractions in class and improve student engagement. If mobile phones must be brought to school then they are required to be off and out of sight the whole day. If your child needs to contact you they should do so through the relevant Student Services.

COLLEGE POLICIES

A policy framework has been developed for staff and students alike to bring a consistent and understood approach to College life. Policies are regularly reviewed in response to legislative requirements and with consultation of the College Board. A complete set of College policies can be found on our [website](#).

- Enrolment and Admissions Procedure
- Student Dress Code
- Assessment Framework and Guidelines
- Positive Learning Framework
- Framework for Countering Bullying
- Homework Guidelines
- Mobile Phone and Electronic Device Guidelines
- Permission to Publish Images
- Acceptable Use of ICT and Online Services Agreement
- Attendance Policy
- Extreme Weather Procedure

BRING YOUR OWN DEVICE (BYOD)

Aveley Secondary College has a focus on developing the digital literacy skills of students to prepare them for future pathways and directions. The Bring Your Own Device (BYOD) program supports the use of Information and Communication Technology (ICT) across the curriculum. ICT provides significant educational value but also requires support and education for appropriate usage.

BYOD has been implemented at Aveley Secondary College (ASC) to allow students access to their **personal devices** for educational purposes in order to enhance motivation and engagement within a classroom setting. Our aim is to prepare students to participate in a rapidly changing world in which work and other activities are increasingly transformed by access to varied and developing technology. We recognise that ICT is an important tool in both the society we live in and in the process of teaching and learning. Students use ICT tools to find, explore, analyse, exchange and present information responsibly and creatively.

Please see our [website](#) for the minimum requirements for a student's device.

THIRD PARTY CONSENT

The College (and Department of Education) requires parental consent for students to use third party online services. At the College, some learning, administration and communication programs utilise third party online service providers. These services provide functions such as; school or student management, teacher administration, communication, student learning and assessment.

Online third party services are provided to students (and staff) by a vendor external to the Department of Education. They can be free or paid services and can include versions that may be downloaded onto computers or mobile devices. These services may require students or teachers to create separate student accounts, providing limited personal information in order to participate in online activities or upload content. Teachers will educate students about cyber safety to minimise online risk and will direct students to only input the bare minimum of information when registering or logging in to a service.

Providing third party consent is a condition of enrolment. Electronic Third Party Consent Forms will be emailed to parents with detailed information on the services that are used at the College. This form must be completed at the time of enrolment in order to provide access to College applications and services for teaching and learning.

CONTRIBUTIONS AND CHARGES

Families are advised in December of each year as to the maximum contribution and charges that **could** be applied for the following year. Contributions are legislated to a maximum of \$235.00 per year however charges are dependent on the actual cost and the student participation. Statements are sent to families early in Term 1 and again each term thereafter.

Voluntary Contributions are directly applied to each learning area to supports your child's education by enabling the college to purchase extra materials, services and resources. At \$235.00 per year, it works out to less than \$6 per week or \$58.75 per term.

Charges are applied for optional activities (excursions, academies, competitions, camps etc) and are only incurred should your child participate in the activity.

Voluntary Approved Requests will be applied towards:

- **Technology Replacement** – providing state of the art equipment such as 3D printers and high specification computer laboratories.
- **Bus Acquisition** – contributing towards purchasing a bus in the future
- **Parents and Citizens (P&C) Contribution** – the P&C donate funds to the college to purchase additional equipment such as sporting uniforms, shade sails etc. The P&C works closely with the college to facilitate fundraising for items to enrich the college curriculum.

INSTALMENT PLANS

Regular contributions by families, as small as \$10 per week are an ideal way to spread the cost of schooling over the year. If you would like to make payment arrangements, please contact our Corporate Services Officers: Aveley.SC.Finance@education.wa.edu.au . We appreciate your contribution.

FAQ - What 'fees' will I have to pay the school?

The College will regularly send a statement to families outlining the Contributions, Voluntary Approved Requests and Charges that are due.

Charges are applied only to students who choose to participate. Activities such as Academies, Excursions, Inter-school Sport can occur throughout the year and students will only participate in some of these activities. Should your child elect to participate in an activity, the charge will need to be paid. The cost of charges is kept to a minimum therefore; only actual costs are passed on.

PAYMENT METHODS

The College has a variety of convenient [methods](#) for families to contribute towards their child's education. Comprehensive instructions are available on our website or please contact Aveley.SC.Finance@education.wa.edu.au for assistance.

- BPoint
- Qkr
- EFTPOS
- Compass

If you are unable to pay via Qkr, BPoint, Compass or Eftpos please contact our Corporate Service Officer either in-person or by emailing Aveley.SC.Finance@education.wa.edu.au

Families can make arrangements with our Corporate Service Officer to pay by instalments. Please contact us to make arrangements for weekly, fortnightly or monthly instalments. Additionally, BPoint can be set up to pay at any interval you require.

GOVERNMENT FINANCIAL ASSISTANCE

[Government financial assistance](#) in the form of the Secondary Assistance Scheme is available for families who have a valid:

- Health Care Card
- Pensioner Concession Card
- Veterans' Affairs Pensioner Concession Card (blue card only)

Application forms are sent to all families with their Contributions and Charges Statements at the beginning of the school year and are also available in the Administration Office. Please present the completed forms and your card to our Administration office. Please do not sign the form until we are able to witness it for you. The forms are due by the end of Term 1 each year. Please note that no late applications will be accepted and the expenses will remain the parent/guardian's responsibility.

The following are available under the Secondary Assistance Scheme.

- Education Program Allowance - \$235.00
- Clothing Allowance - \$300.00
- ABSTUDY Supplement - \$79 or \$156

Further information can be found at the below link:

<http://www.concessions.wa.gov.au/Concessions/Pages/Secondary-Assistance-Scheme.aspx>

CAFÉ

Fresh As Cafe are the providers of the Café service to the College. Chris is passionate about providing fresh and nourishing meals to our students and is an avid community participant. The Café is open for both lunch breaks each day of the week. Menus are available on our [website](#) however please check the Café boards for daily specials.

Please contact Chris and her team to discuss your child's ongoing needs. The Café caters for a number of allergies including gluten and nut free. Orders are prepared fresh and the staff can adapt most menu items to suit your child's needs.

Orders:

Ordering is easy!

Qkr!: Orders can be placed via [Qkr!](#) Just click to order, select an 'Order Time' for Lunch 1 or Lunch 2 and confirm your payment. If no selection is made, the order will be prepared for Lunch 2 collection. Orders can be collected from the signposted counter near the seating area.

Phone: Orders and payments can be made over the phone on 6296 1069 or 0402 245 221.

The Café is equipped with EFTPOS facilities and accepts cash.